

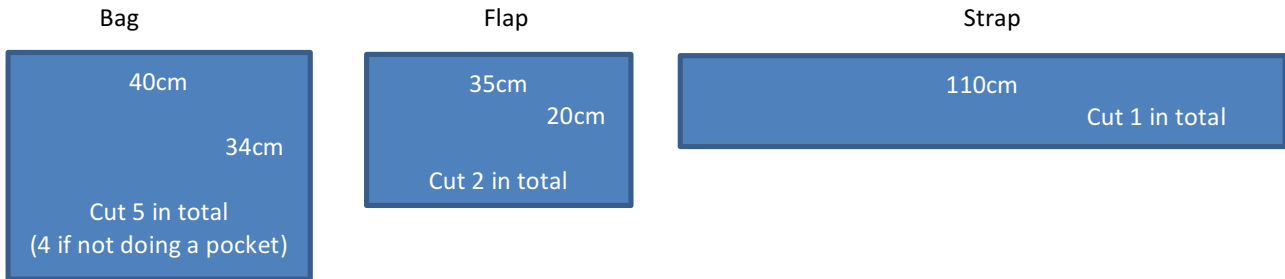
Laptop/iPad bag tutorial

Step one: cut all fabric pieces (you can use your own measurements here):

Cut 5 fabric pieces 40cm by 34cm for outside (2), inside (2) and pocket (1)

Cut 2 fabric pieces 35cm by 20cm for flap of bag

Cut 1 fabric piece 110cm by 12cm for strap of bag



Step two: Sew OUTSIDE OF BAG

- Put the OUTSIDE pieces of your bag RIGHT SIDE together, and pin the two sides and bottom together.
- Sew along those three sides with a 1.5cm SEAM ALLOWANCE (BLUE DOTTED LINES). Do not sew the top side of the bag.

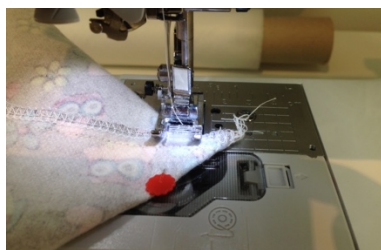


Step three: Make CORNERS for base of bag* (optional)

- Choose one corner of the base of the bag and pull the front and back apart so it forms a triangle.
- Match the side and bottom seams and pin 1.5 to 2cm from the edge of the stitching (not the end of the fabric).



- Sew across the corner. Repeat for other corner. Trim the excess fabric. Turn right way around.



Step four: Prepare your pocket

- On the TOP EDGE of the POCKET piece, fold over the edge and press with a hot iron. Then fold it over again and press. Stitch along this pressed edge with matching (or contrasting) thread.

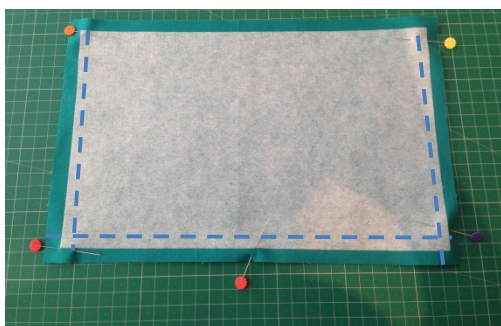


Step five: Make the LINING of BAG (repeats steps three and four) with pocket

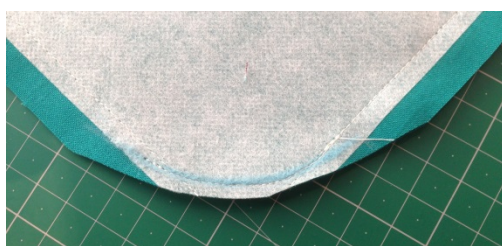
- Pin the POCKET piece to the RIGHT SIDE of one of the lining pieces and BASTE. Sew a line down the middle of the pocket if you want to divide it into two segments.
- Follow on as per instructions in Step two – with the POCKET piece being in between the two LINING pieces (which have their RIGHT SIDES together).
- Continue on with Step three (corners) above for the LINING.

Step Six: Make the FLAP of your bag

- Put the FLAP pieces of your bag RIGHT SIDE together, and pin the two sides and bottom together.
- Sew along those three sides with a 1.5cm SEAM ALLOWANCE. Do not sew the top side of the FLAP.
- If you want to make the corners CURVED, find a cup, place it on the corner and draw the curve with tailor's chalk. Stitch over the chalk markings.



- Trim the corners.
- Turn the FLAP the right way around and press with a hot iron.
- TOPSTITCH the three sewn edges of the FLAP.

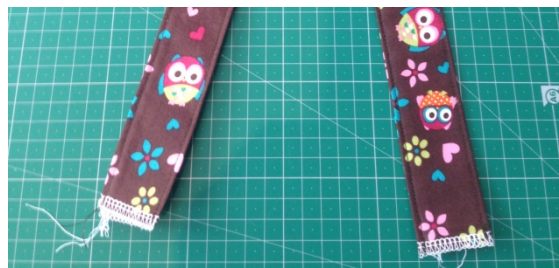


Step Seven: Make the STRAP of your bag

- Turn over a 2CM hem along the two long lengths.
- Fold the STRAP over in half WRONG SIDES TOGETHER, and press.

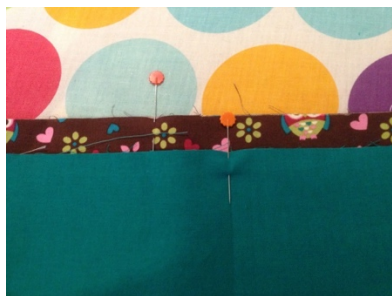


- Top stitch the two long lengths of the STRAP together to make a sturdy finished strap.



Step Eight: Attach the FLAP and the STRAP to the OUTSIDE of the bag

- The four separate sections of the bag are complete: OUTSIDE, LINING, FLAP and STRAP. They now all need to be put together. **These last three steps are difficult to explain on paper. Please see your teacher.**
- Find the middle of the FLAP and the middle of the OUTSIDE of the bag, line them up and pin them together. BASTE the FLAP to the OUTSIDE (RIGHT SIDE) of the bag.
- Find the middle of both ends of the STRAP, match and pin it to the side SEAMS of the OUTSIDE of the bag. BASTE the STRAP to the OUTSIDE of the bag.

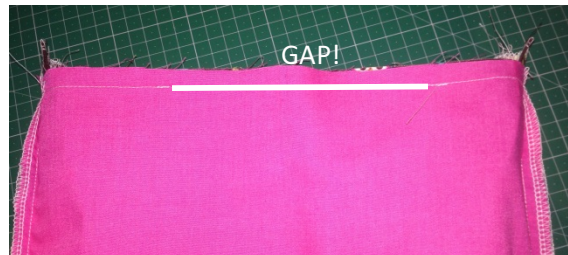


Step Nine: Attach the LINING to the OUTSIDE of your bag

- With the OUTSIDE of the bag the RIGHT WAY OUT, and the LINING of your bag INSIDE OUT, put the OUTSIDE of the bag inside the LINING.



- Match the SEAMS of the OUTSIDE and LINING, and pin all around the mouth of the bag.
- Stitch around the mouth of the bag, but make sure you LEAVE A 10CM OPENING at the FRONT of the bag.



- Pull the bag the right way out by reaching into the opening and pulling the OUTSIDE of the bag out.
- Iron this new seam so it is crisp, making sure there is a good crease in the OPENING of the bag.



Step Ten: Finishing off the bag with TOP STITCH

- Push the LINING into the OUTSIDE of the bag and press the mouth of the bag with a hot iron, making sure the opening you used to pull your bag the right way out is ironed neatly and the OUTSIDE matches the LINING.
- Pin the opening shut.



- Top stitch all the way around the mouth of the bag, starting under one of the STRAPS.
- Make sure the opening between the OUTSIDE and the LINING of the bag closes properly with the top stitch.



YOU ARE
FINISHED
YOUR BAG!